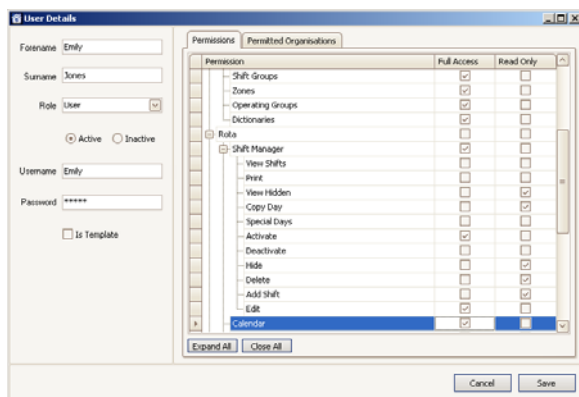




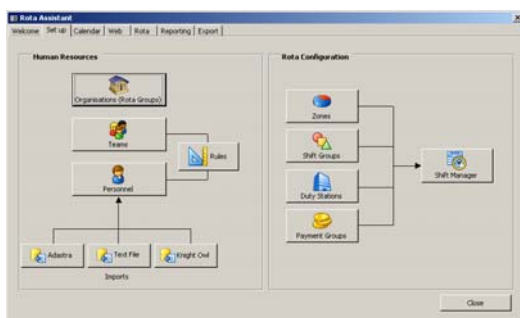
## Security Module

In response to user requests RM5 has a detailed security model which now allows a high degree of fine tuning over which features are switched on and off for individual users. This is critical in large sites where many users with different roles and security clearance have access to the system.



## Other Enhancements

There are many other enhancements in key functions such as the Rules and Availability systems. The Report Generator and Rota Assistant have also been redesigned.



## SERVER UPGRADES

Over the next few weeks users will notice a small amount of scheduled downtime – you will get plenty of warning – while we upgrade your web servers to new hi-spec machines. This will speed up your sites and create a smoother user experience. This is just part of our commitment to continuous service improvement and will be free of charge.

## TRAINING

We have a dedicated Training Manager who can offer on-site training at our customer site or off-site at our training centre in Wakefield. It is very important you keep your staff trained and up to date to make sure you get the best out of your system. We offer standard courses for new and existing users as well as Update courses to accompany major new upgrades and features.

Our next scheduled courses are as follows:

Rota Master Refresher (1 day)	July 7 <sup>th</sup> , Sept 9 <sup>th</sup>
Rota Master Financials (1 day)	July 15 <sup>th</sup> , Aug 18 <sup>th</sup>
Rota Master Advanced (1 day)	July 28 <sup>th</sup> , Sept 16 <sup>th</sup>
Rota Master for new users (2 day)	July 21 <sup>st</sup> , Sept 29 <sup>th</sup>





## THIN CLIENT

As an alternative to the traditional client/server LAN installation many users are now opting to deploy Rota Master as a thin client application so no software is installed on client machines. This type of installation is possible at most sites.

## DEVELOPER PORTAL

We have recently introduced a web based developer portal to allow on-line discussion and collaboration between our development team and members of our customer development network. This is a membership-only facility designed to allow quicker design and specification of potential new projects and features.

## HOW TO CONTACT US

-  01924 252360
-  01924 253620
-  [www.iqus.co.uk](http://www.iqus.co.uk)
-  [sales@iqus.co.uk](mailto:sales@iqus.co.uk)